

Minutes

Climate and Ecological Emergency Working Group

Held at:	Remote Meeting
Date	Wednesday, 20 April 2022
Present	Councillors Anthony Hills, Ian Meyers, Lesley Whybrow (Chair) and David Wimble
Apologies for Absence	None
Officers Present:	Andy Blaszkowicz (Director of Housing and Operations), Kate Clark (Case Officer - Committee Services), Alastair Clifford (Chief Officer - Operations), James Farrar (Senior Planning Lead (Otterpool Park)), Olu Fatokun (Low Carbon Senior Specialist), Hazel Sargent (Planning Policy Specialist), Charlotte Spendley (Director of Corporate Services) and Adrian Tofts (Strategy, Policy & Performance Lead Specialist)
Others Present:	Thomas Lefevre (Etude), Richard Haynes (White Cliffs Partnership), Tom Henderson (Kent County Council), Sharon Bayne (Blackwood Bayne), Irene Seijo (Seijo Associates)

9. **Declarations of Interest**

There were no declarations of interest.

10. **Minutes**

The minutes of the meeting held on 13 December 2021 were approved, the Chair's signature will be added.

The following comments were made with regard to various updates from the last meeting:

UK 100 Membership – Adrian Tofts, Strategy, Policy and Performance Lead Specialist advised that a welcome pack had been received. UK100 has asked

follow-up questions about the council's approach and Mr Tofts has replied to these questions. Mr Tofts said he would circulate the pack to members.

Proposed Green Business Grant Scheme – the Chair, Councillor Whybrow mentioned that this needs more prominence on the Council's website. Currently it is sitting under Folkestone Works website.

District Wide Strategy – Ms Olu Fatokun, Low Carbon Senior Specialist, advised she had started contacting possible participants to the steering group.

11. **Draft Net Zero Toolkit**

Mr James Farrar, Senior Planning Lead, initially opened this item and started by saying that match funding had been obtained from Homes England to enable this commission.. A steering group was established with input from other organisations including KCC and Homes England .

Feedback from members welcomed.

Mr Thomas Lefevre, Etude, gave a presentation and project update to members. He mentioned the four key deliverables; Decarbonising buildings – strategic objectives; New Build Net Zero Toolkit; Retrofit Net Zero Toolkit; Recommendations for planning policy.

Members asked questions:

- Ground source heat pumps, are they cost prohibitive? There are possible grants available and discussion as to whether long term gas use is compatible with climate emergency
- Retrofitting – could homeowners use this toolkit? The toolkit could be a practical guide to homeowners as the same principles apply.
- Planning policies – recommendations and best practices to inform the next version of the Local Plan.
- Heat stress, insulation, how do we manage this? Adaptation is as important as mitigation. Guidance available on overheating.
- When will the document be completed? Aiming for publication towards end of May following peer review . This will be followed by training sessions being made available to members and officers,.

Members thanks Mr Lefevre for the update.

12. **Joint working with White Cliffs Partnership**

A presentation was given to members by Mr Richard Haynes, from the White Cliffs and Romney Marsh Partnership. The presentation is attached to these minutes.

Mr Haynes made the following comments as he went through the slides:

- White Cliffs Countryside Partnership was set up in 1989 and the Romney Marsh Countryside Partnership was created in 1996.
- Reporting to a Steering Group.
- Membership has grown to include companies and charities.
- Successful in obtaining Lottery funding.
- The Partnership team are locals to the area.
- The Partnerships managed 13 nature reserves over two districts.
- Events take place; inspiring local communities; promoting the local area.
- Three sites within F&H district; Romney Warren; Greatstone Dunes and Folkestone Warren.
- Carbon reductions measures in place; increasing biodiversity and connectivity. Use of Aspen fuel.

The Chair asked about Aspen fuel. This is a cleaner fuel, less emissions, however more expensive than regular petrol.

Councillor Hills mentioned Dungeness Estate's parking problems. Mr Haynes is aware of the recurring parking problems. Although the Estate is owned by EDF, there are two regular wardens in the area at the weekend.

Mr Clifford advised the Council are very aware of the parking problems at Dungeness and Lade. Further signage will be in place; double yellow lines installed and leaflet drops to Kite Surfing Schools.

The Chair, Councillor Whybrow, thanked Mr Haynes for his presentation.

13. **Kent and Medway Climate Adaption Programme**

Mr Tom Henderson from Kent Council Council gave a presentation on the Climate Change Adaptation Programme for Kent and Medway. The presentation is attached to these minutes.

Mr Henderson gave background information to the programme. He asked that feedback is given on all aspects of the document and that guidance is provided on the final slide of the presentation.

The Chair clarified timescales for feedback which are the end of May 2022, however this date is flexible. A formal consultation will be actioned at the end of the year.

14. **Green Infrastructure Strategy**

The report introduced the draft Green Infrastructure Strategy, its findings and recommendations. It is a local plan evidence document that will provide further detail to development plan policies as well as providing information for the consideration of planning applications. It could also form the basis for a future Green Infrastructure Supplementary Planning Document (SPD) to provide additional clarity for decision-making.

A presentation was given to members by Sharon Bayne from Blackwood Bayne Consultants and Irene Seijo from Seijo Associates Ltd. The presentation is attached to these minutes.

Within the presentation an overview was given to members along with the draft action plan culminating in the next steps for the Council to take. In this respect any comments would be welcomed.

Councillor Hills commented that there are updates needed in the Strategy, for example, amending that the Romney Marsh is not below sea level, however it is below high tide level.

The Chair also mentioned a couple of minor points which will be followed up by email.

15. Update on trial to reduce use of pesticides

Mr Alastair Clifford, Chief Officer – Operations gave a presentation. He reminded members that this subject was proposed as a Motion at Full Council in 2019. The presentation is attached to these minutes.

Mr Clifford took members through the reduction in usage of pesticides over the last six years including application types.

It was noted that regular invasive weed control techniques led to reductions in Glyphosate use, however the increased Glyphosate usage in 2021 was due to Giant Hogweed on the Princes Parade site.

Alternative options were explained to members along with trials and demos that had taken place.

16. Update on current consultations from Government and Kent County Council

The paper summarised three current consultations for the Working Group's information. Members were given a brief overview of the consultations along with the response deadline for each one.

Mr Tofts advised F&HDC would look to respond to the Plan Tree consultation and possibly to the Defra – Nature Recovery Green Paper: protected sites and species.

Members comments included:

- 'Right tree, right place' – Romney Marsh in particular, as the right management needed for water conservation.
- The county council's pledge to plant an additional 1.5 million trees – assurances needed that double counting would be avoided.
- Concerns about the biomass power plant in Sandwich and how this affects the loss of trees.

- Environmental and air quality targets will not meet worldwide targets.

Members thanked Mr Tofts for his report and update.

17. **Update on Carbon Action Plan**

Olu Fatokun, Low Carbon Senior Specialist, gave an update on the Council's Carbon Action Plan. The presentation shown is attached to these minutes.

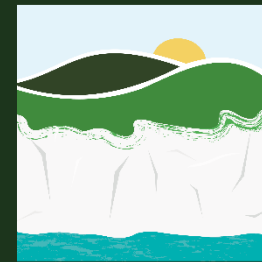
Ms Fatokun highlighted some of the actions undertaken and progress so far. She reminded members there are 33 individual actions in the Action Plan.

Councillor Whybrow asked about emissions and was advised that although there is information for the 2019/20 monitoring year – there will be an update for the 2020/21 monitoring year that should be completed in May and this will be reported to the next working group meeting.

This page is intentionally left blank



WHITE CLIFFS & ROMNEY MARSH COUNTRYSIDE PARTNERSHIP



WHITE CLIFFS
COUNTRYSIDE PARTNERSHIP

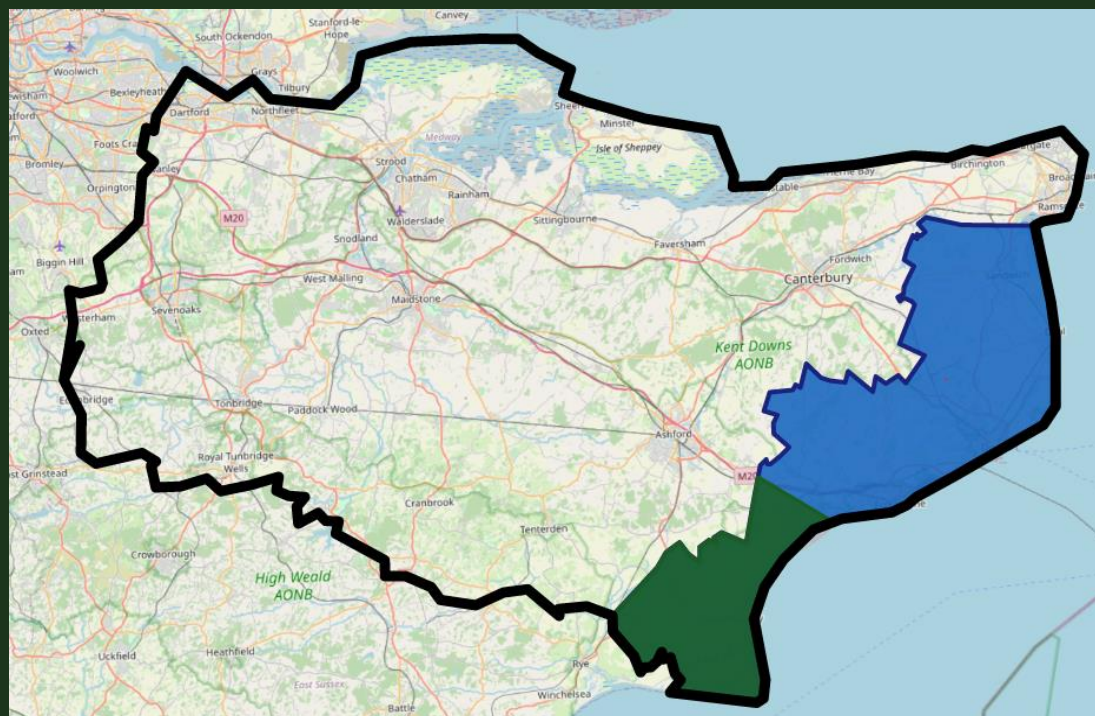


ROMNEY MARSH
COUNTRYSIDE PARTNERSHIP

WHAT IS OUR PURPOSE?

Our purpose is to **protect and enhance** the **wild spaces** of South-East **Kent**.

We will achieve this by **inspiring people to act** for the local environment and **the future of our planet**.



Wildlife – Climate - People



WHITE CLIFFS
COUNTRYSIDE PARTNERSHIP



ROMNEY MARSH
COUNTRYSIDE PARTNERSHIP

Focus Areas

1. Managing wild spaces
2. Reducing our climate impact
3. Inspiring local communities
4. Managing the Partnership

Wildlife **O**utdoors **W**ellbeing



WHITE CLIFFS
COUNTRYSIDE PARTNERSHIP



ROMNEY MARSH
COUNTRYSIDE PARTNERSHIP



MANAGING WILD SPACES



WHITE CLIFFS
COUNTRYSIDE PARTNERSHIP



ROMNEY MARSH
COUNTRYSIDE PARTNERSHIP

HELPING OTHERS TO HELP THE ENVIRONMENT

We also help local landowners and communities alike to create wildlife havens on their doorstep for them to enjoy. This provides the added benefit for wildlife of a greater level of connectivity between the wild spaces in South-East Kent.



Hedgerow restoration



Tree Planting



Pond Creation



WHITE CLIFFS
COUNTRYSIDE PARTNERSHIP



ROMNEY MARSH
COUNTRYSIDE PARTNERSHIP



Guided Wildlife Walks



Green Gang



RMC Wildlife Canoeing

INSPIRING LOCAL COMMUNITIES



WHITE CLIFFS
COUNTRYSIDE PARTNERSHIP



ROMNEY MARSH
COUNTRYSIDE PARTNERSHIP



PROMOTING THE LOCAL AREA



WHITE CLIFFS
COUNTRYSIDE PARTNERSHIP



ROMNEY MARSH
COUNTRYSIDE PARTNERSHIP



Page 14



Managing FHDC's Nature Reserves



WHITE CLIFFS
COUNTRYSIDE PARTNERSHIP



ROMNEY MARSH
COUNTRYSIDE PARTNERSHIP



Page 15



Romney Warren



WHITE CLIFFS
COUNTRYSIDE PARTNERSHIP



ROMNEY MARSH
COUNTRYSIDE PARTNERSHIP



Page 16



Greatstone Dunes



WHITE CLIFFS
COUNTRYSIDE PARTNERSHIP



ROMNEY MARSH
COUNTRYSIDE PARTNERSHIP



Folkestone Warren



WHITE CLIFFS
COUNTRYSIDE PARTNERSHIP



ROMNEY MARSH
COUNTRYSIDE PARTNERSHIP

BEING THE EYES AND EARS ON THE GROUND

We are keen to make sure that **the Nature Reserves** that we manage are **kept special for** all site **visitors and wildlife** that drops by. Our Rangers are frequently found patrolling known issue spots, to try to proactively deal with any concerns as soon as they start to develop.

Page 18



WHITE CLIFFS
COUNTRYSIDE PARTNERSHIP



ROMNEY MARSH
COUNTRYSIDE PARTNERSHIP



CARBON REDUCTION IN OUR OPERATION

Considering the impact of our work from a volunteer biscuit to how we get to site.



WHITE CLIFFS
COUNTRYSIDE PARTNERSHIP



ROMNEY MARSH
COUNTRYSIDE PARTNERSHIP



Any Questions?



WHITE CLIFFS
COUNTRYSIDE PARTNERSHIP



ROMNEY MARSH
COUNTRYSIDE PARTNERSHIP

RICHARD HAYNES

richard.haynes@dover.gov.uk

Page 21



WHITE CLIFFS
COUNTRYSIDE PARTNERSHIP



ROMNEY MARSH
COUNTRYSIDE PARTNERSHIP

This page is intentionally left blank

The Climate Change Adaptation Programme for Kent and Medway

Kent County Council

Tom Henderson

Climate Change Adaptation

Kent County Council



What are we doing?

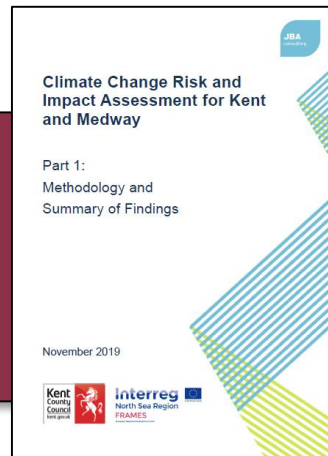


KENT ENVIRONMENT STRATEGY

A STRATEGY FOR ENVIRONMENT, HEALTH & ECONOMY - MARCH 2016



Page 24



Adaptation Programme and Implementation Plan

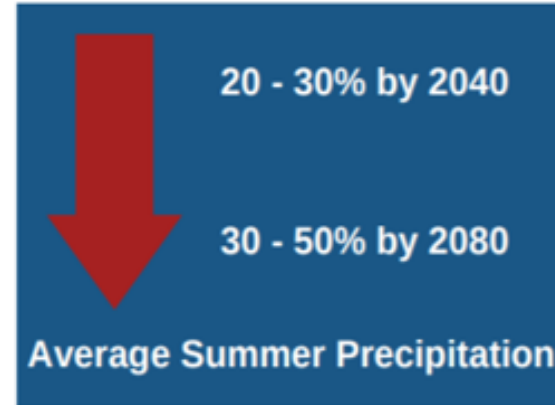
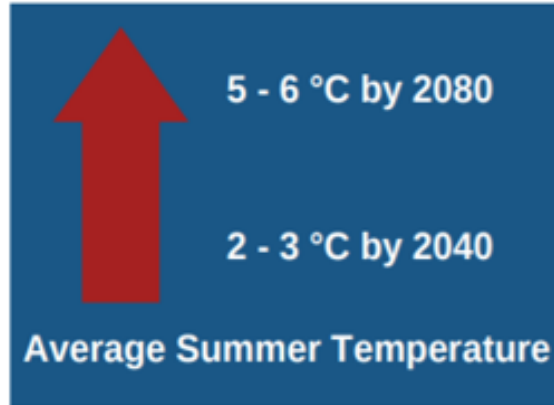
- Building on the Climate Change Risk and Impact Assessment for Kent and Medway (2019)
- Sector based approach:
 - Agriculture
 - Natural Environment
 - People and the Built Environment
 - Local Government
 - Transport
 - Industry
 - Utilities

2050 Vision: *By 2050, Kent and Medway will have enhanced their resilience to climate change and will be regarded as a model of excellence for climate adaptation, evidenced by their thriving society, economy, and environment.*

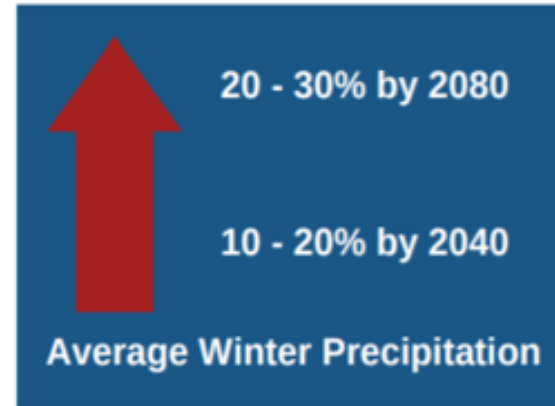
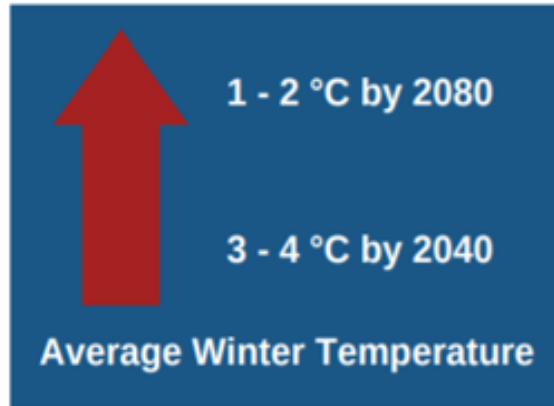


Future climate changes (UKCP18)

**HOTTER
DRIER
SUMMERS**









**WARMER
WETTER
WINTERS**





Kent CC Risk Assessment

		→				
		High temperatures	Storm events	Flooding and coastal change	Water shortages	Other
	Agriculture	Medium	High	Medium	Medium	Chemical leaching
	Industry	Medium		High		
	People & built environment	High		High		Air quality
	Natural Environment	High	High	High	Medium	
	Transport	High	High	High		Soil instability
	Utilities	High	Medium	Medium		Drought Landslips



Draft Adaptation Programme structure

- **Introductory chapters**; why adapt, policy context, purpose and vision.
- **Sector Chapters:**
 - Key risks, opportunities and organisations
 - Our priority
 - Resilience outcomes
 - High level activities
 - Now (2023-2025)
 - Medium term (2025-2030)
 - Longer term (2030 and beyond)



How? Local Government chapter example

Our priority: To embed climate adaptation into all key policy areas across local governments in Kent and Medway to ensure the quality and continuity of the key services they provide and safeguard the health and wellbeing of the county's residents as our climate changes.

Resilience outcome 1: Collaborative approach to embedding adaptation: *Local authorities will work together to systematically incorporate climate adaptation into planning, commissioning, procurement processes and long-term decision-making.*

Resilience outcome 2: Climate awareness and preparedness: *Residents', local government officers' and local politicians' knowledge of local climate risks and the actions that must be taken to reduce the impacts of our changing climate will be raised through sustained and targeted awareness raising campaigns.*

Resilience outcome 3: Climate resilient infrastructure and emergency planning. *Ensure that existing and new local government infrastructure is climate resilient, and that emergency planning and response is prepared and able to cope with the growing impacts of our changing climate on infrastructure.*





1. Risks and opportunities

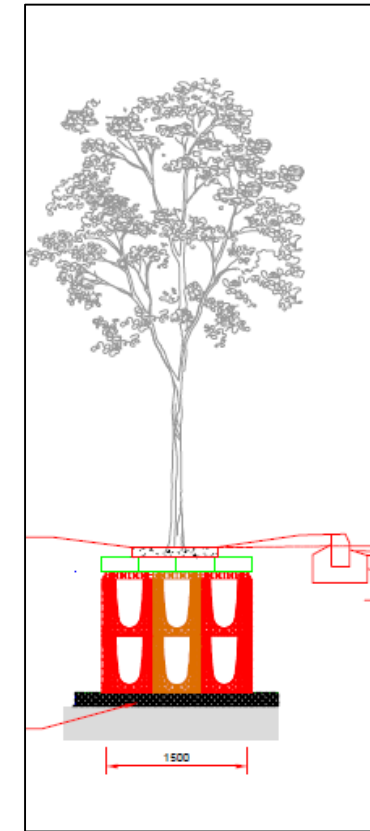
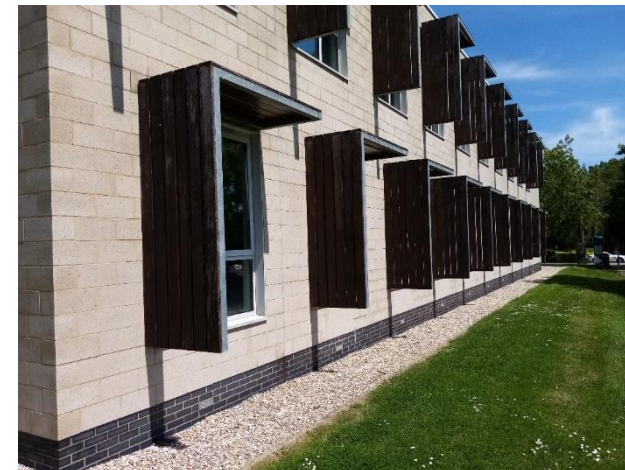
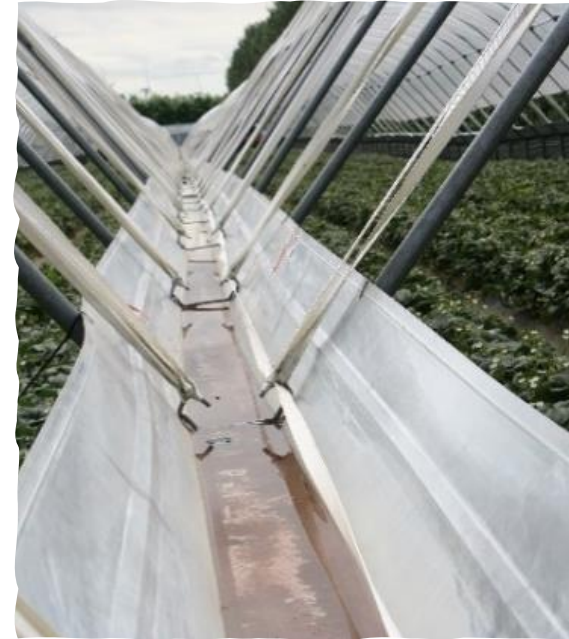
- Accurate/representative for your areas?

2. Resilience outcomes and high level activities

- Do you agree with them as priorities?
- Do you agree with the proposed activities?
- What are you already doing and to what extent?
- What is not being done but needs to be done? Why (barriers)?

3. High level activities and timelines

- What are the priority adaptation actions and timeframes in your areas?



This page is intentionally left blank

Folkestone and Hythe Green and Blue Infrastructure Strategy

Page 31

First Draft February 2022
v1.0

Minute Item 14

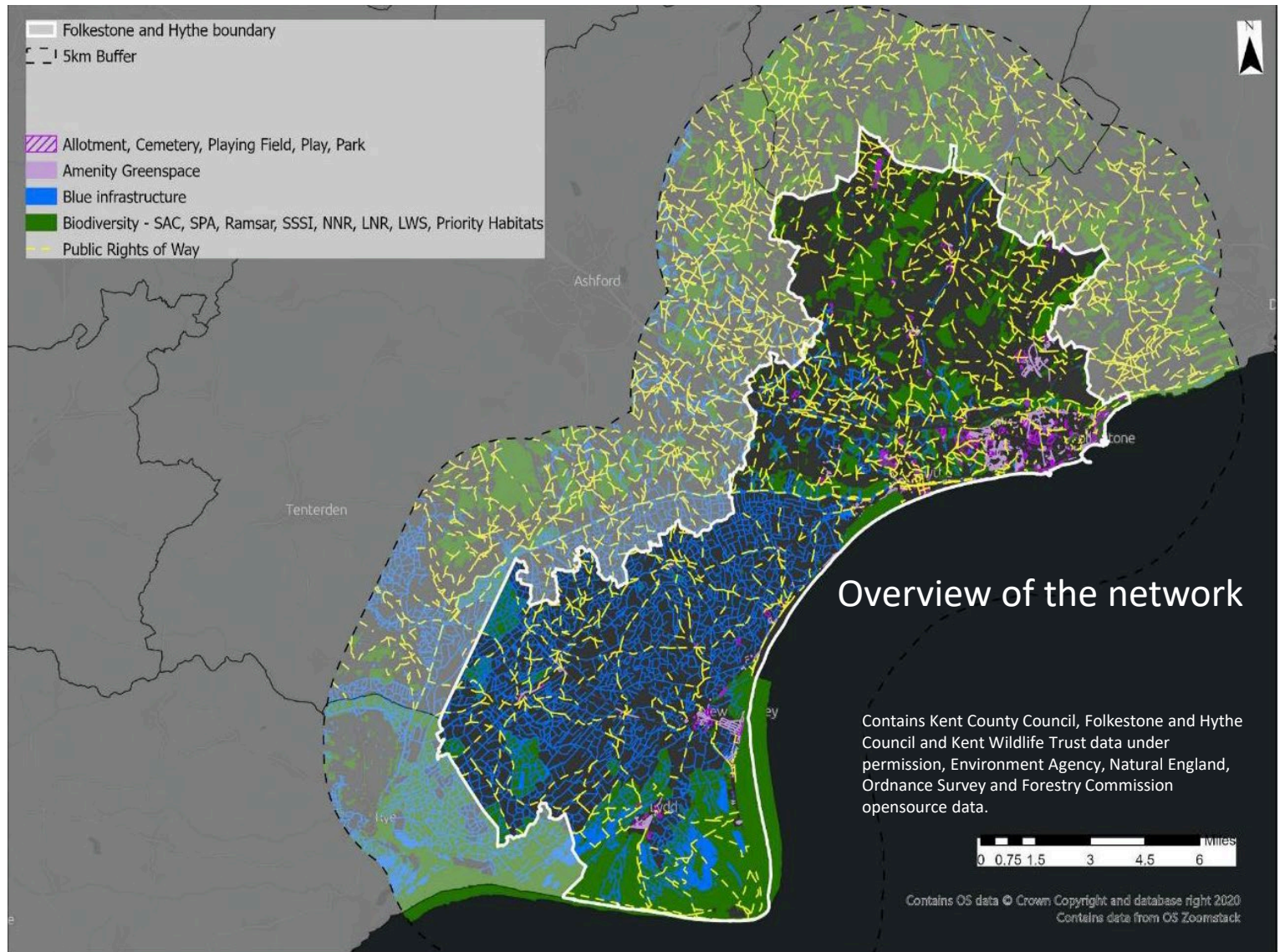
About the Strategy

Folkestone and Hythe's Green and Blue Infrastructure Strategy is an analysis of the strategic network of green and blue infrastructure across the district.

Green and blue infrastructure planning takes a multidisciplinary approach to seek opportunities which address issues across many areas.

Page 32 A comprehensive study of GBI across the district included:

- All relevant national and local planning policy
- Impacts of climate change
- Consultation with many stakeholders
- Reports, studies and initiatives relevant to the district's strategic green and blue infrastructure now and in the future
- GIS mapping to analyse and visually 'layer' data in detail across the district



Why is a Green and Blue Infrastructure Strategy Needed?

- Positive planning for green infrastructure is required by the National Planning Policy Framework. This underpins the Core Strategy and PPLP.
- Environment Bill 2021 brings in a range of measures to improve the natural environment including:
 - Biodiversity Net Gain
 - Local Nature Recovery Strategies
 - Strengthened Biodiversity Duty on local authorities
- It supports delivery of the Government's 25 Year Environment Plan which includes priorities for green infrastructure including Green Infrastructure Standards, which local authorities will need to apply.
- It provides a robust, well-evidenced and comprehensive strategy to underpin future FHDC policy including climate change.



Analysis of Evidence...

Five detailed evidence areas were described and assessed:

- Biodiversity, trees and woodlands
- Access, recreation and active travel
- Health and wellbeing
- Blue infrastructure and the coast
- Landscape character and heritage

The areas of the district are also described in more detail

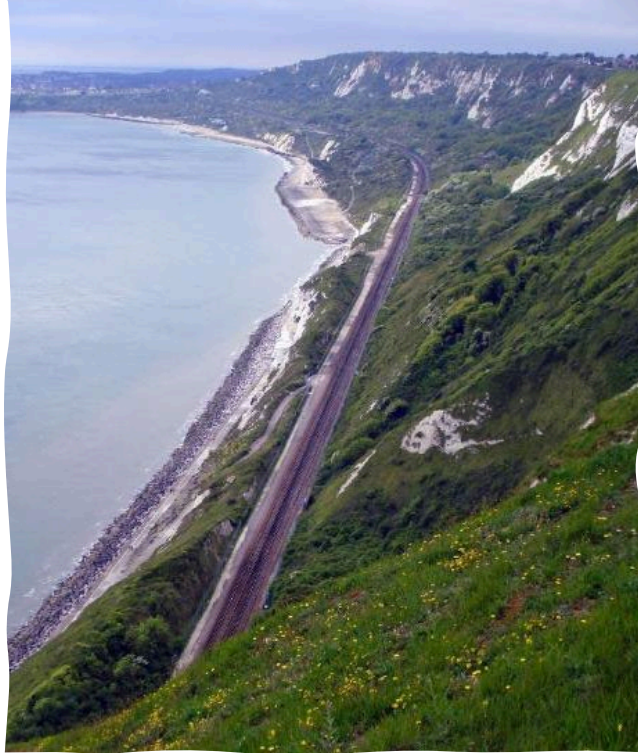
- Folkestone and Hythe towns;
- Romney Marsh; and
- The North Downs

It provides an assessment of the needs and opportunities, strategic priorities and future actions.



The District's valuable habitats

- 5 of UK's 7 rarest bumblebee species present in Kent, making it the most important county in the UK for bumblebee species diversity – in Folkestone and Hythe the shorthaired bumble bee
- Turtle dove - the UK's fastest declining bird species.
- At Dungeness 94% of the county's vegetated shingle habitat is found in Folkestone and Hythe district
- Folkestone and Hythe district has 20.3% of Kent's lowland calcareous grassland
- Late spider-orchid on the chalk downland is unique to Kent



The district provides an outstanding landscape to live and work

- A unique and diverse coastline
- Glorious grasslands
- Valuable woodlands and trees
- Exceptional recreational facilities
- Important rivers and streams
- Outstanding heritage assets
- Green and blue infrastructure is important in supporting a landscape-scale or 'nature network' approach, through securing biodiversity value in a planned way. Green infrastructure also helps to bring nature into urban centres, which also connects people with wildlife.

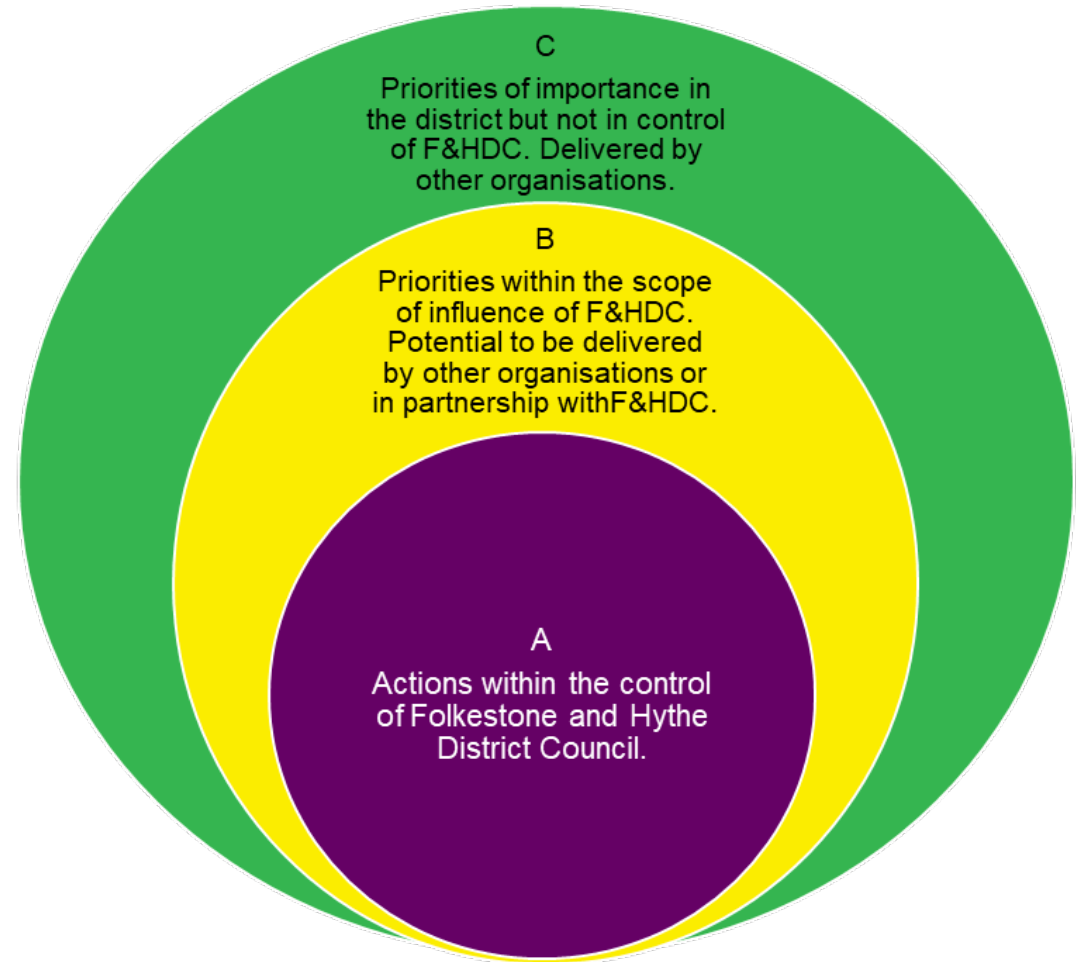
Draft Action Plan

A summary of the **needs, opportunities and priorities** for the Green and Blue Infrastructure Strategy has been drawn together in an Action Plan from the five evidence areas and the three spatial areas.

The Action Plan should be seen as an initial long list. Not all of which are within the direct control of the council, or which can be delivered by the council alone.

The graphic on the right explains the colour coding in the chart for delivery.

Initially priorities for delivery have been coded A B or C, although these may change after further consultation





Next Steps

- That the Council should carry out a four week targeted consultation of expert and other environmental groups on the Green Infrastructure Strategy and proposed action plan.
- That the Council then carry out a period of wider public consultation on the Green Infrastructure Strategy proposed action plan for four weeks.
- The Strategy and results of consultation be presented to members at Cabinet.

(20th Nov 19) This Council resolves to:

Move towards phasing out the use of all pesticides and weed killers in council owned parks, gardens and play areas. Trial pesticide-free alternatives to control weeds in these areas. These might include; biodegradable foam or hot steam treatments on weeds.

To report the outcomes of these trials to the Climate and Ecological Emergency working group for discussion and recommendation within 12 months.

Grant an exception to the above 'phasing out' regarding the control of Japanese knotweed, or other invasive species, where there are currently no effective mechanical techniques available. For these plants glyphosate will be stem-injected, rather than sprayed, to reduce its spread in the environment.

Grant an exception on sprays only in relation to Giant Hogweed where it's not safe to be dug out or safely removed by other means or where invasive plants are too small to be stem injected.

It is recognized that herbicides are required for the control of weeds in fine turf such as bowling greens and tennis courts. Any chemical use will be kept to an absolute minimum and alternative methods of control, trialled when and if they become available.

Write to the secretary of state for the environment to inform the government of this Council's opposition to glyphosate-based pesticides and to call for a UK-wide programme to phase out use once trials have been concluded and viable alternatives have been introduced for weed control across the District.

Current Position

Year	Litres
2015	50
2016	70
2017	30
2018	75
2019	17
2020	11
2021	14.5

Page 40

Application type	Glyphosate (L) 2019 to 2021 Total use
Paths/hardstanding	17.92
Invasive weeds	13.15
Cemetery strips	8.93
Preparing flower beds	1.66
Sport Areas	1.2
Totals:	42.86

Alternative Options

- Hot Foam – machinery starts at £25k and needs an additional mule (10k for petrol, 15k electric) to move around effectively. Does not take into account cost to replenish foam materials and run mule. Expect at least 3 times more visits than pesticide application, plus increase in carbon footprint from running diesel mule and large diesel engine to run hot foam machine.
- Hot Water - machinery starts at £30k for diesel and 50k for electric plus mule. and needs an additional mule to move around effectively. Machinery is large and struggle to get into smaller footpaths. Does not take into account cost to replenish materials and run mule. Expect at least 6 times more visits than pesticide application, plus increase in carbon footprint from running diesel mule and large diesel engine to water machine. Water is dispensed at 2bar which may damage pathways.
- Mechanical Removal (hand) – considerable labour increase.
- Mechanical Removal (mechanical brush) - does not effectively kill roots, so needs considerably more visits. Can also cause considerable damage to paths, machinery is cheap. So may be a good low cost option for one off applications in tight spaces. HAVS implications as well as carbon footprint of running machine.
- Hot Burner – cheap and has been on the market for a long time, dangerous and proven to be ineffective on a industrial scale.
- Strimming – does not kill roots, so needs considerably more visits. It takes more time, uses extra petrol so increases carbon footprint and increases HAVS exposure to operator. Also risk of damage to components.
- Mulching – suitable only for flower beds and borders where current use is low, this is already used as appropriate.
- Electric Thermal – machinery starts at xk . A voltage of 8000-15000v is passed through the plant to effectively burn the root. Risks associated with this are considered to be very high, in a similar manner to the hot burner.
- Cemeteries –allow for naturalised areas within churchyards.

• **BEST OPTION – HOT FOAM – £67-£99K CAPITAL PLUS £20K REVENUE**

Trialled & Demos

Electric hedgecutter – limited power (new growth only) and battery life is still an issue.

Electric blower – limited power and battery life is still an issue. We do have a few of these for some teams.

Electric Chainsaw – limited power and battery life, we have brought a number of these for teams that use infrequently.

Groomer – cylinder mower and collector which would be good for fine turf (Kingsnorth and sports pitches).

Petrol version £7000 – Electric Version £13,000 (potential to replace 2).

Power Barrow - Petrol version £3000 – Electric Version £6,000 (potential to replace 2)

Zenith Ride Own Mower - Petrol version £23000 – Electric Version £33,000 (potential to replace 2)

Mule – Petrol/Diesel version £9000 – Electric Version £15,000 (potential to replace 3)

STIGA pedestrian mower Petrol/Diesel version £700 – Electric Version £1500 (early demos deemed not suitable).

ACS Pedestrian mower (to be trialled next week)

Vans – range and payload difficulties.

STAGE	ACTION	ACHIEVMENTS TO DATE	STATUs
Stage 1: Short-term Actions	Carbon literacy / climate change training for staff and Members	<ul style="list-style-type: none"> As of 1st April, 265 members of staff have completed Climate Change e-learning module. OD will be contacting staff individually regarding outstanding / overdue e-learning modules. Roughly 30 people manager and members attended the climate emergency training session 	<ul style="list-style-type: none"> Ongoing
	Climate Change Champions staff scheme	<ul style="list-style-type: none"> Climate Change Champions Group has been established to further explore ways to expand energy and environmental awareness campaign Environmental Calendar produced and Climate Change Team Challenge has been introduced. Last Climate Change Champions meeting held 23rd march and tips on saving energy while working from home was shared 	<ul style="list-style-type: none"> Ongoing
	Measure waste produced by the Council operations	<ul style="list-style-type: none"> Work undertaken to alter the waste streams coming out of the Civic Centre and reduce recycling contamination (changes to bins and clarifications/communications for waste streams). Recycling bins with appropriate signage installed in civic centre Cleaning solutions are being bought in 5L bottles, including dish soap and hand soap. The desk sanitiser is also being bought in a 5L bottle that staff are to dilute into refillable 750ml spray bottles. 	<ul style="list-style-type: none"> Complete
	End single-use plastic	<ul style="list-style-type: none"> Use of plastic cups for water coolers have been stopped – no longer purchasing plastics just finishing the old stock. Cleaning solutions are being bought in 5L bottles, including dish soap and hand soap. 	<ul style="list-style-type: none"> Ongoing

		<ul style="list-style-type: none"> The desk sanitiser is also being bought in a 5L bottle that staff are to dilute into refillable 750ml spray bottles 	
	Reduce printing and paper waste	<ul style="list-style-type: none"> Emails being promoted as the first choice of communication where applicable. MyAccount continues to grow with over 55% of resident take up New contract for copiers due to start 1st April reduced number of copiers reduced from 14 to 6. This avoids a number of devices taking power while on standby. Print room major printers being reduced from 3 to 1 for more efficient running. A new contract has been let for printing directly to post the supplier operates on a larger scale and increasing carbon efficiency is part of the requirements of the contract 	<ul style="list-style-type: none"> Ongoing
	Expand the energy awareness campaign	<ul style="list-style-type: none"> Working with internal and external communications team to continue to progress this action. 	<ul style="list-style-type: none"> Ongoing
	Explore the use of EV staff pool car(s)	<p>4 car parks now up & running: High Knocke, The Paddocks, Wilberforce Road and Tram Road. Civil/electrical works are being carried out on others</p> <ul style="list-style-type: none"> Waiting on Kent County Council to develop strategy on On-Street Electric Charging Points 	<ul style="list-style-type: none"> Ongoing
	Assess the scope for extending sustainable travel incentives for staff	<ul style="list-style-type: none"> Cycle-to-work scheme already in place; information on cycle training is on the intranet. Scheme developed with Tusker Cars, due to be launched to staff on 25 April 2022 Options for co-wheels or similar will be explored through the ongoing district wide carbon plan 	<ul style="list-style-type: none"> Ongoing

	Promoting reductions in water usage	<ul style="list-style-type: none"> Included alongside energy awareness campaign with regular staff bulletins sent out every Friday by the council's Organisational Development team. 	<ul style="list-style-type: none"> Ongoing
	Review the use of peat, redesign mowing regimes, etc.	<ul style="list-style-type: none"> Review of cutting regimes Use of peat free growing media has resumed and 90% of summer bedding is now supplied peat free. 	<ul style="list-style-type: none"> Ongoing
	Convert street lighting to LED	<ul style="list-style-type: none"> Conversion works now underway. 	<ul style="list-style-type: none"> Ongoing
	Review carbon and waste impacts of catering for events	<ul style="list-style-type: none"> Will be put into consideration when we host events in spring/summer months This was highlighted for inclusion in cabinet away day however it was postponed, Update to be provided 	<ul style="list-style-type: none"> To be incorporated in future
Stage 2: Medium-term Actions	Checklist of criteria to inform decision-making	<ul style="list-style-type: none"> Climate Change Impact Statement is being added to all reports to committee and cabinet and documented accordingly Regular checks carried out with Leadership support to make sure CIS is included on all reports as required. A review of Climate Impact Statement will soon be undertaken to assess how it has helped in decision making 	<ul style="list-style-type: none"> Complete
	Reports to cabinet to include a climate impact statement (CIS)	<ul style="list-style-type: none"> Worked with OD to produce email reminder with Q&Q sheet. This was emailed to all staff and team leads to remind report authors to conduct out their own carbon impact assessment. Started noticing increase in report authors' conducting their own CIS. 	<ul style="list-style-type: none"> Ongoing
	Review sub-metering installations	<ul style="list-style-type: none"> Exploring specific bills for individual occupants 	<ul style="list-style-type: none"> Awaiting decision on future of civic center
	Carry out energy audits across the whole Council non-residential property	<ul style="list-style-type: none"> LASER have been contacted as potential provider and waiting to hear back on whether LASER will charge for this service. 	<ul style="list-style-type: none"> Awaiting update from LASER

Potential for voltage optimisation.	<ul style="list-style-type: none"> Voltage optimizer in place in civic center 	<ul style="list-style-type: none"> Complete
Evaluate adding to the Council's own estate EV charging	<ul style="list-style-type: none"> The funding available is for chargepoints that can be accessed by local residents at all times. However, under the workplace charging scheme, we may also qualify for 75% grant for the depot. The remaining 25% plus any electricity upgrade costs would need to be funded by the council so we need to have discussions about budget position etc. 	<ul style="list-style-type: none"> To be confirmed
Expand opportunities for flexible working	<ul style="list-style-type: none"> Bookable hot desks and meeting rooms with hybrid meeting equipment available to all staff. A review of uptake and impact of Agile Working scheduled for summer 2022 in order to explore improvement. 	<ul style="list-style-type: none"> Complete
Sustainable procurement policies	<ul style="list-style-type: none"> Procurement staff attending KCC Climate Change Network Procurement meetings on a regular basis In progress, still watching but have meeting scheduled with carbon action team to discuss internal training options Agreed new wording for procurement contracts drafted and proposals to be discussed by Corporate Leadership Team on 3 May 2022 Training on assessing carbon emissions for procurement being explored. 	<ul style="list-style-type: none"> Ongoing
Council-owned land to increase biodiversity	<ul style="list-style-type: none"> Map produced and according to JG only one made needs cross checking. Also, Are we including the four sites that are managed by us on behalf of KCC; Birkdale Drive, Churchill Avenue, Cherry Garden Lane and Southern Way. Links to Green infrastructure Strategy to take this forward 	<ul style="list-style-type: none"> Ongoing

	Switch to green tariff for Council-purchased electricity	<ul style="list-style-type: none"> Proposing Lot 1 of the Dynamic Purchase System (DPS). 	<ul style="list-style-type: none"> Awaiting update from LASER
	Review of Green Infrastructure Strategy	<ul style="list-style-type: none"> Green Infrastructure Strategy has been produced by consultants Present to CLT, next steps is to do a public consultation. Going to WG in April 	<ul style="list-style-type: none"> Ongoing
Stage 3: Longer-term Actions	Work with contractors to move towards Ultra-Low Emission Vehicles	<ul style="list-style-type: none"> Suppliers are either required (in the specification) or encouraged (in the specification and tender) to do this, depending on what is proportional for the tender/contract. 	<ul style="list-style-type: none"> Ongoing
	Reduce energy losses by retro-fit technologies	<ul style="list-style-type: none"> Housing stock condition survey completed. Net Zero toolkit being explored to address this. 	<ul style="list-style-type: none"> Ongoing
	Examine installation of low emission heating	<ul style="list-style-type: none"> Housing stock condition survey completed. Depends on future of civic centre 	<ul style="list-style-type: none"> Awaiting decision on future of civic center
	Identify any suitable locations for solar photovoltaic (PV) panels	<ul style="list-style-type: none"> Sites identified and studies on this complete initial study complete, proposal to be taken to Corporate Leadership Team in May to advise on next steps 	<ul style="list-style-type: none"> Ongoing
	Examine the business case for Vehicle-to-Grid EV	<ul style="list-style-type: none"> Action to be looked at when fleet starts to switch to EV. 	<ul style="list-style-type: none"> Dependent on introducing EV scheme in action above
	Install water-saving technology within all commercial buildings within the Council portfolio.	<ul style="list-style-type: none"> Chief Officer – Operations 'Operations has identified possible potential Can be included in housing carbon reduction strategy being produced 	<ul style="list-style-type: none"> Feasibility study required
	Explore the potential for rain water harvesting systems and treatment.	<ul style="list-style-type: none"> Chief Officer – Operations has identified possible potential Can be included in housing carbon reduction strategy being produced 	<ul style="list-style-type: none"> Feasibility study required.

	Seek to incorporate carbon reduction requirements into new tender contracts	<ul style="list-style-type: none"> Initial carbon reduction requirements are been drafted. 	<ul style="list-style-type: none"> Ongoing,
	Where possible contracted out service proposals include and deliver high levels of sustainability	<ul style="list-style-type: none"> This is ongoing, initial carbon reduction requirements are been drafted. 	<ul style="list-style-type: none"> Ongoing,
	Develop appropriate flood mitigation measures and tree planting schemes	<ul style="list-style-type: none"> Tendering process for update the council's 2015 Strategic Flood Risk Assessment (SFRA) completed Contractor appointed – Waterman Group KCC working on Spatial Risk Assessment for Water for Kent (see presentation to Working Group, 9 September 2021) which can feed into the council's SFRA update 	<ul style="list-style-type: none"> Ongoing
	Ensure that the Local Plan sets developments and land use standards that reduce carbon and increase sustainability (subject to proposed Government reforms of the planning system)	<ul style="list-style-type: none"> Process for Local Transport Plan 5 (LTP5) process has commenced with KCC leading. KCC held initial meeting with F&HDC staff. Net Zero Toolkit being drafted by consultants Levitt Bernstein/Elementa/Etude to provide guidance for developers and homeowners on new build and refurbishment projects. Toolkit will also provide recommendations for future local plan policies. Presentation on draft to be given to April 2022 Working Group. 	<ul style="list-style-type: none"> Ongoing
	Explore phased upgrade of the council fleet to hybrid (HEV) or full battery electric vehicles (BEV)	<ul style="list-style-type: none"> Prioritise vehicles in fleet around Folkestone and Hythe. Also consider ensuring vehicles are multi-purpose and can be used across different services. Implementation is dependent on introduction of charging points and assessment of costs. 23 car parks to have EV charging in, but these are for public. 	<ul style="list-style-type: none"> Ongoing , dependent on fleet upgrade and street charging points
Stage 4: Offsetting	Offsetting remaining carbon emissions	<ul style="list-style-type: none"> To be explored dependent on results of emissions reductions actions in Stages 1-3. 	

**Where
Emissions
Cannot be
Reduced**

--	--	--	--

This page is intentionally left blank